



# Quick Start Guide

DESIGNER EDITION

A yellow and blue badge with a white butterfly icon at the top left. The text "DESIGNER EDITION" is written in white, bold, sans-serif capital letters.

PLAYER LICENSE

A blue and yellow badge with a white butterfly icon at the top left. The text "PLAYER LICENSE" is written in white, bold, sans-serif capital letters.

PORSCHE

**Stilprägend.**  
Die neuen 911 Targa 4 Modelle.



# I. Installation Preparations

Always use the current program version when installing smartPerform Pro.

It is available via our contact page at [www.smartperform.de/contact/](http://www.smartperform.de/contact/) after filling out the required data fields and sending your request. You will then immediately receive a link via e-mail to download the current version.

Please ensure that your target system can fulfill the hardware requirements for smartPerform. They are listed in our data sheet for smartPerform Pro at [www.smartperform.de/downloads/](http://www.smartperform.de/downloads/).

## **For a simple configuration, we recommend the following order when installing your programs:**

1. Windows Operating System with .net Framework (see data sheet for further information)
2. Microsoft Office or other application programs, such as PDF, Skype etc.
3. smartPerform Pro

When starting without a valid license key, smartPerform Pro will open in the “Designer Edition Advanced Medium” mode. (= free creative tool as demo version). This mode enables the creation, maintenance and tests of smartPerform user interfaces but no presentation or kiosk access. To access the “Designer Edition Ultimate” software (= full version of the creative tool) or to activate user interface applications in a productive environment (= operating license incl. CMS function), you will need an activation key. For this, also see the functional overview in the data sheet or in the smartPerform Pro pricelist. Please contact your expert partner or send an e-mail to [sales@smartperform.de](mailto:sales@smartperform.de) if you have any questions.

The following sections describe the basic installation and configuration. Due to the large number of design options, we recommend participating in the “Quick-Start smartPerform” webinar or partaking in our training program ([www.smartperform.de](http://www.smartperform.de)).

# 1.1. Installation

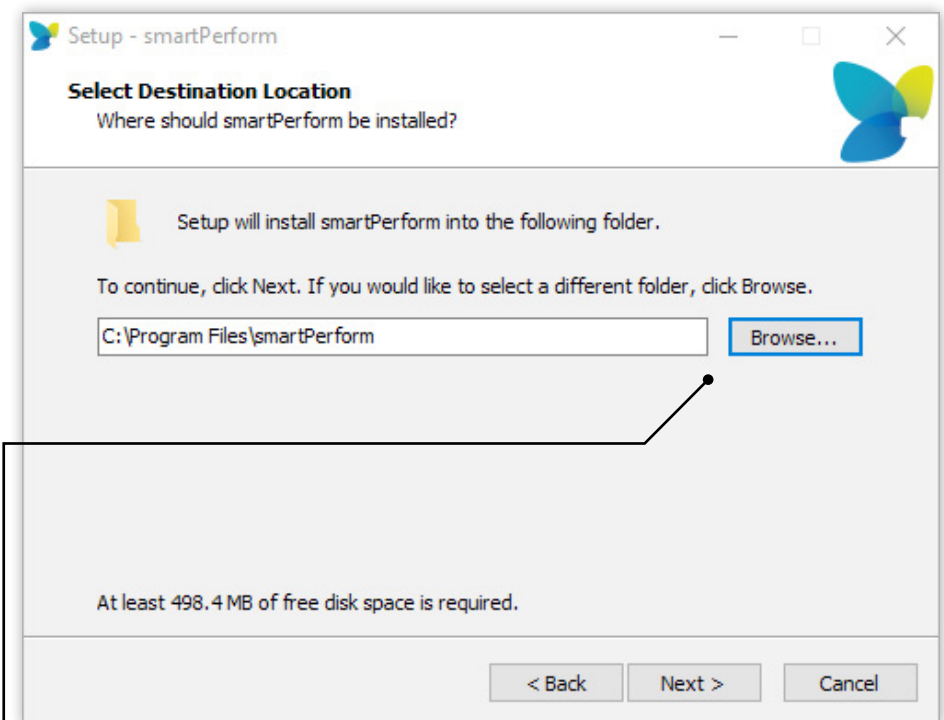
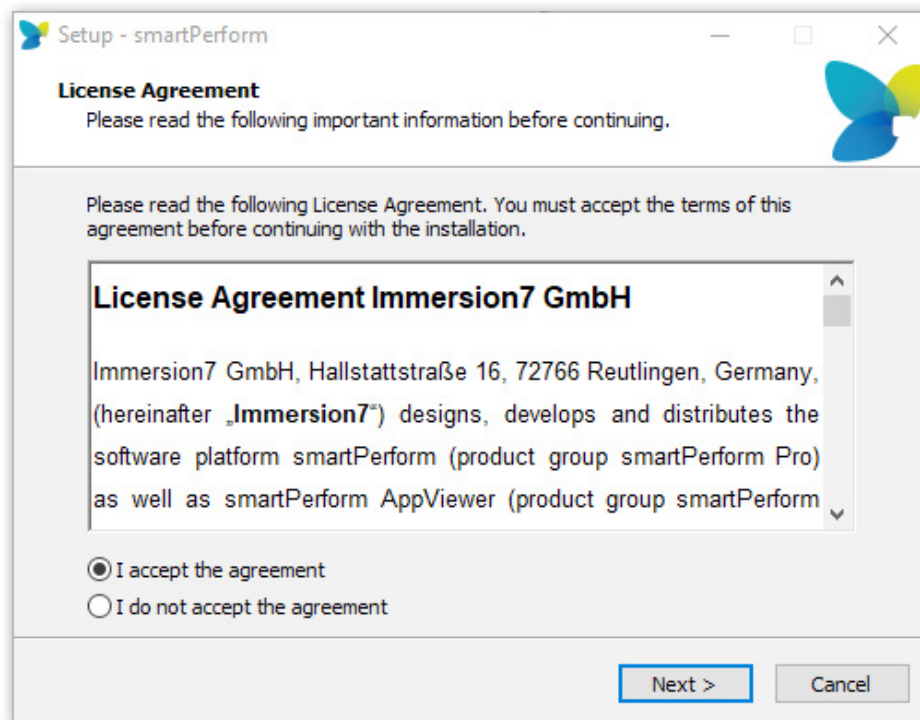
smartPerform is installed by opening the smartPerform .exe via a “double-click”. Please note the hardware and software requirements for operating smartPerform. These requirements are listed in the current smartPerform Pro data sheet ([www.smartperform.de/downloads/](http://www.smartperform.de/downloads/)).

### Screens without touch:

For screens without touch function, the interactions take place via mouse and/or keyboard.

### Touchscreen:

On touchscreens, interactions can also be designed by hand.



### Note:

Target folder for the installation of smartPerform

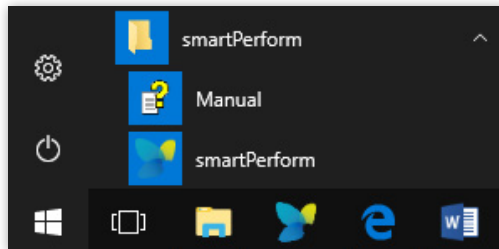


## 2. Start smartPerform!



### Desktop Link:

If a desktop symbol for smartPerform was created during the installation process, it will now be available there. Start smartPerform Pro by double-clicking that symbol.



### Start Menu:

Alternatively, you can use the Windows Start menu to locate the newly created smartPerform folder. In addition, the smartPerform program can also be found and started using the search function.

### smartPerform Pro start page



The following selection options are available when starting smartPerform:

NEW / PROJECT ASSISTANT...

### New/Project Assistant ...:

Click on “New / Project Assistant...” to create a new project or open previous projects.

PRESENT

### Presenting:

Start the last open project directly in the presentation mode here. This shuts down all functions for editing the user interface. A protected kiosk mode is activated. Close smartPerform using the key combination “Alt+F4”.

### Note:

This key combination can be set in the configuration menu.

EDIT

### Edit:

“Edit” starts the most recent project in CMS / edit mode. In this mode, you can make changes to layout and content.

QUIT

### Quit:

Closes smartPerform Pro

# 3. Project Assistant

**New:**

Create a new project. A target folder for new projects was set up during installation. You can change this target folder any time.

**Open:**

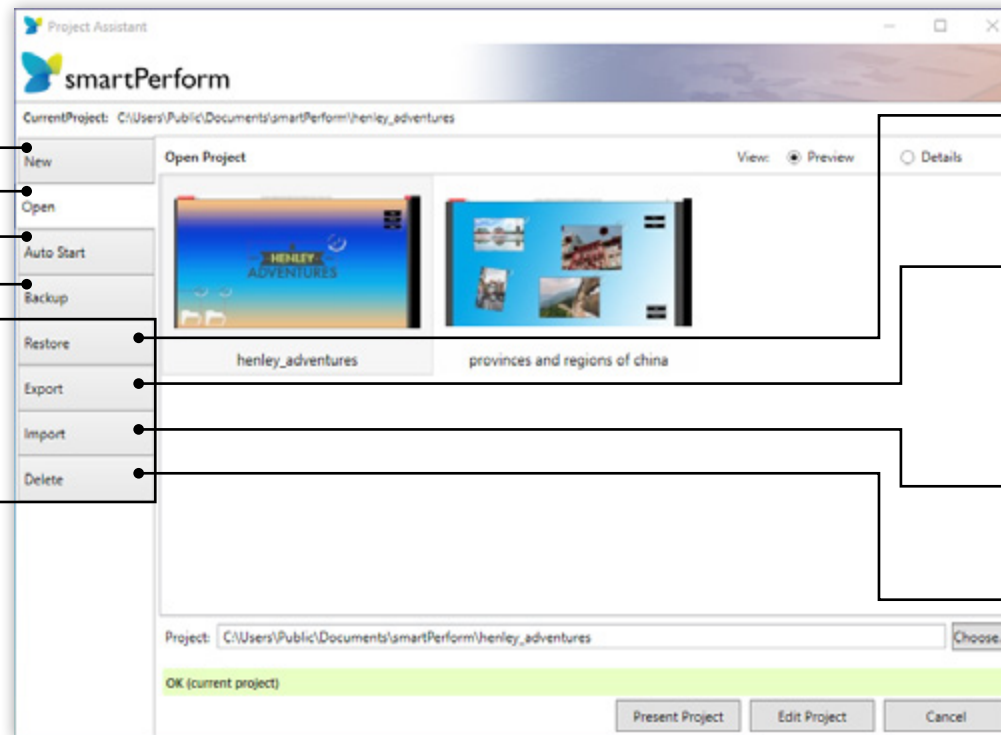
Opens previously created or saved projects.

**Auto Start:**

Activate **“Auto Start”** for a project to have the project start (presentation and kiosk mode) directly after Windows starts.

**Save:**

Use **“Save”** to save the current version of a project.



**Restore:**

Use **“Restore”** to restore the last saved version of a project.

**Export:**

Use **“Export”** to save the current project in any directory.

**Import:**

Use **“Import”** to integrate projects created with an older version (V1.5 and older) of smartPerform into a newer version.

**Delete:**

Use **“Delete”** to remove a project.

**Note:**

When activating the Project Assistant, some menu options will only be visible once a project has been loaded in the edit mode.

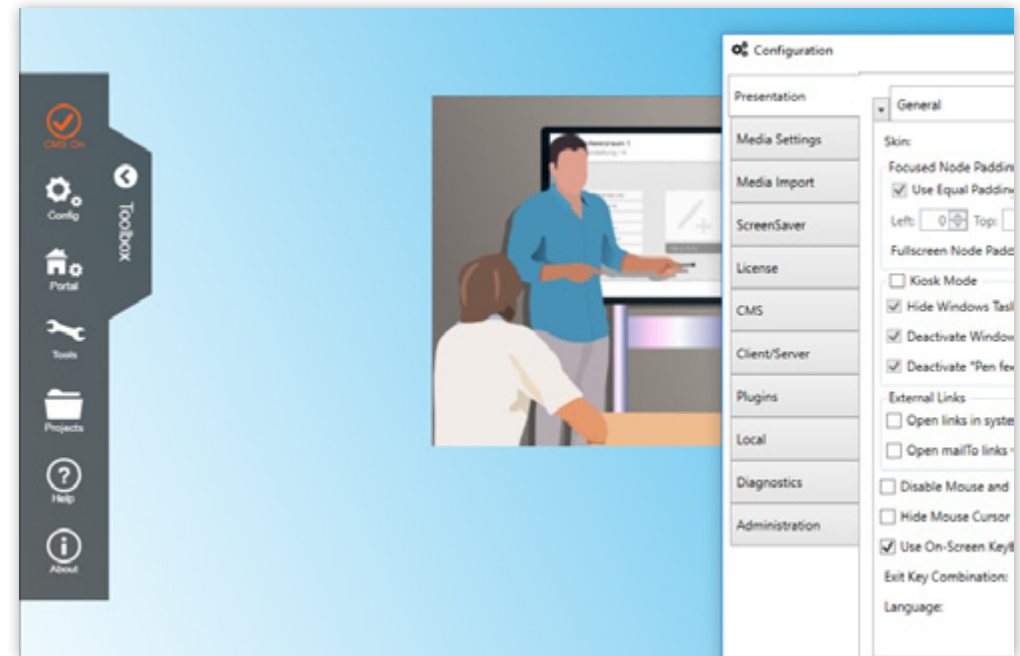
## 4. Configuration

After loading an existing or newly created project, the smartPerform Pro portal interface will appear.

General or global project settings can be made in the **“Config”** menu. That includes basic settings for the background image, colors, etc. Click on **“Extended Configuration”** (bottom left) to show additional setting options.

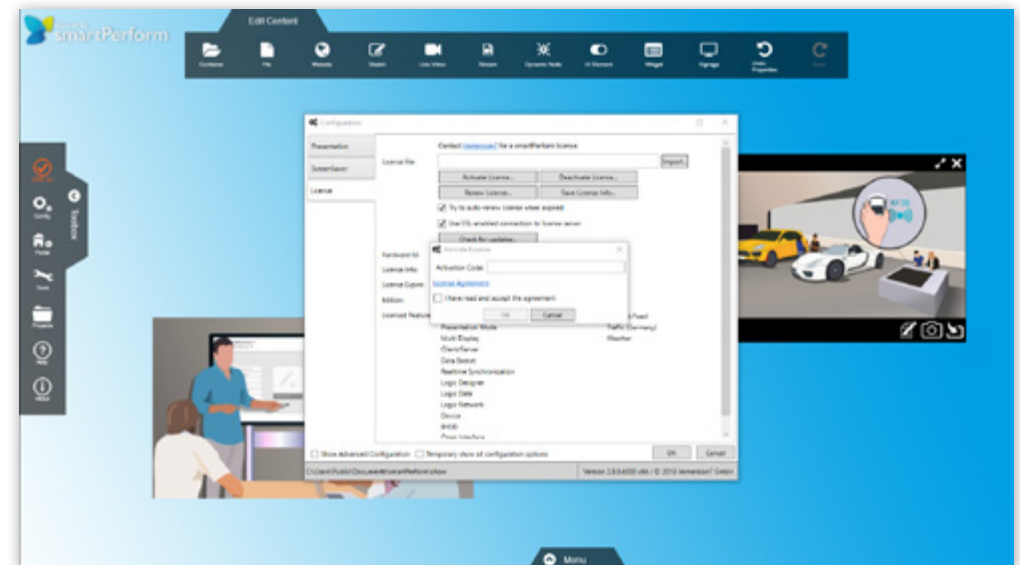
**Note:**

Due to the large number of design options, we recommend participating in a Quick-Start webinar or partaking in our training program ([www.smartPerform.de](http://www.smartPerform.de))



### 4.1. Activation of the License

smartPerform Pro offers different options to activate the license. For more details, see the information in the smartPerform Pro data sheet. The most common method is the online activation using a license key. To so, open the corresponding menu in the configuration under **“License”** > **“Activate license”** and enter your personal activation code there. The requirement for the activation/deactivation is an existing Internet connection. After purchasing or leasing a smartPerform Pro license, you will receive the code as a license certificate.



## 4.2. smartZoom & smartDesk

Depending on your needs, you can begin creating a project with the presentation form (“Skins”) smartZoom (single window) or smartDesk (multi-window). The relevant settings are found at “Toolbox” > “Config” > “Presentation” > “General” > “Skin”.

### smartZoom:

In this form, content can also be included in deeper levels to use the “Zoom functions” to then “dive in”.

### smartDesk:

In this form, content can be integrated which will automatically “come forward” after activation and which can then be freely moved, rotated, enlarged or reduce on the interface. This is the most preferred form for multi-user applications.

## 5. Edit Mode (CMS)

Presentations with smartPerform are created in the edit mode (Content Management System mode). A red button “CMS Mode” is located in the left top area and can be used to shift from the edit mode to the presentation mode. Alternatively, use the key combination “STRG+P” to shift between the two operating modes.



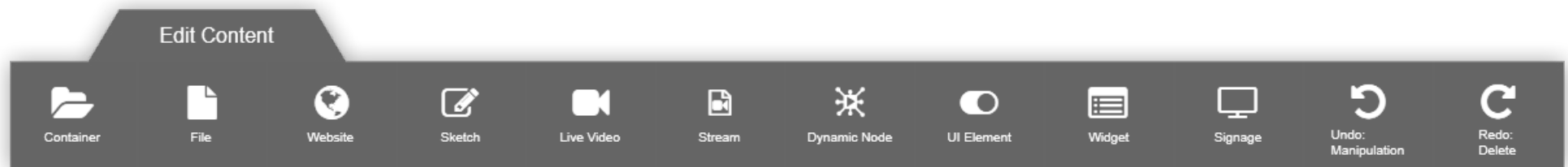
### Note:

The activation/deactivation of the edit mode is also controlled with the “CMS” button in the toolbox.

## 5.1. Edit Menu Contents

The menu for editing contents, **Edit content**” appear automatically when the toolbox is opened. The toolbox is located on the left side of the screen. In the **“Edit content”** menu, you can create new containers, integrate various file formats or websites, create drafts, integrate live videos and much more!

All edit steps are logged and can be restored using **“Undo”** or **“Repeat”**.



## 5.2. Handling Containers

### Create:

Containers define additional sub-levels of your project. They are created on the portal page. In addition to various file formats, such as images, videos and documents, additional containers can be placed in a container as well. Create such a container using the **“Edit content”** menu via drag & drop or by clicking on **“Container”**.

### Open:

After having created a container, you can move and open the container by clicking on it or, in case of a touchscreen, via touch.



## 5.3. Handling Contents

### Create:

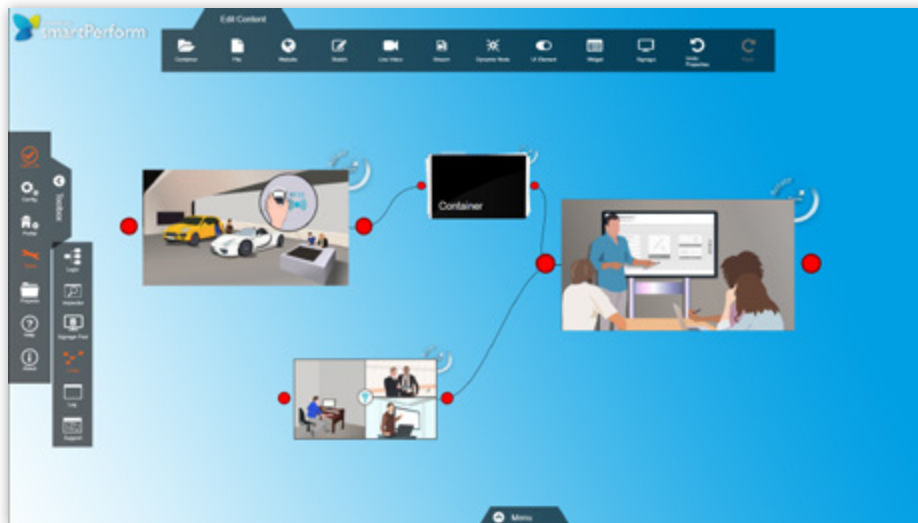
You can create content such as images, videos and documents using drag & drop or by clicking on **“File”** in the content bar.

### Open:

You can open content within a project by clicking on it or touching it in case of a touchscreen.

### Link:

For stories to develop, the created content can be linked and thereby contextualized in the **“Link mode”** in the toolbox under **“Tools”**. You can link two elements with a **“Click”** on the corresponding red anchor points. That way, you can link a PDF file with an image file, for example, as shown in the image below. To remove links again, use the mouse as **“cutting tool”** by pressing the right mouse button and “wiping” across visual connection.



## 5.4. Starting Point

The **“Menu bar”** contains the **“Home”** button which you can use to close all open documents and containers.

### smartZoom:

**“Click”** or **“touch”** any content to “zoom” in on that content while a **“click”** or **“touch”** outside of the window level returns to normal view.

### smartDesk:

Selected, open contents, such as containers or files can be closed by clicking on the **“X”** to the upper right.

## 6. Help

Within the edit mode **“CMS mode”**, use the **“F1”** key to access the help menu. Here, you will find further information about the smartPerform Pro functions. The help menu is also accessible via the Windows Start menu in the smartPerform folder or in the **“toolbox”**.

## 7. Close smartPerform

### In Edit Mode:

Close the application by clicking on the **“X”** to the top right. Alternatively, use the **Alt+F4** key combination.

### In Presentation Mode:

Close the application using the **Alt+F4** key combination. A customized key combination can be set up in the configuration.